

BACKLIGHT BULB REPLACEMENT INSTRUCTIONS

P/N EA-10-BULB

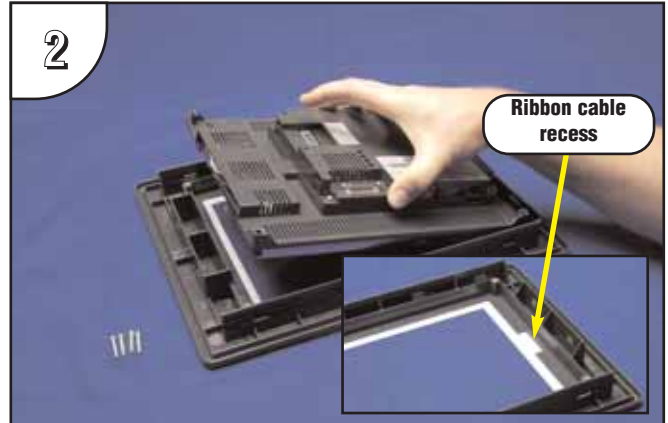


WARNING: This procedure should only be performed by qualified personnel who are experienced in working with electronic equipment. Take the necessary steps to prevent damage that may be caused by static electricity discharge. Disconnect input power to the touch panel before proceeding. Take care when locating the main electronics housing into the bezel to prevent pinching the ribbon cable between the housing and bezel.

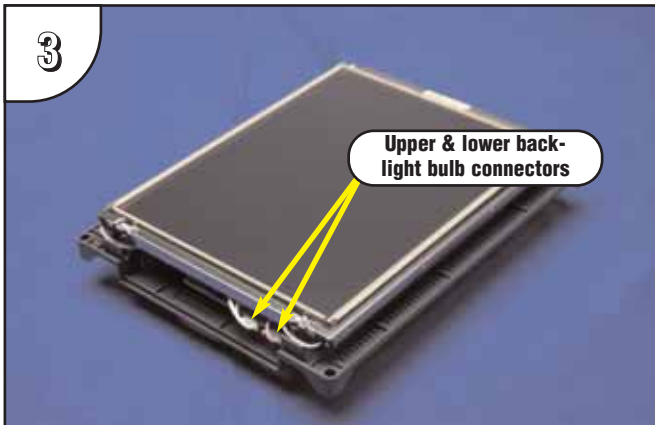
Preparation: Disconnect input power and all other connections, then remove the touch panel from the control cabinet. In a clean environment, place the panel face down on a lint-free soft surface to prevent scratching the front of the panel.



With power disconnected, use a #2 Phillips screwdriver to remove the four outer screws holding the touch panel's main electronics housing to the front bezel.



Lift the touch panel's main electronics housing from the front bezel. Set the front bezel and four screws to the side. Observe the ribbon cable recess on the front bezel (see detail) for use in re-assembling the panel.



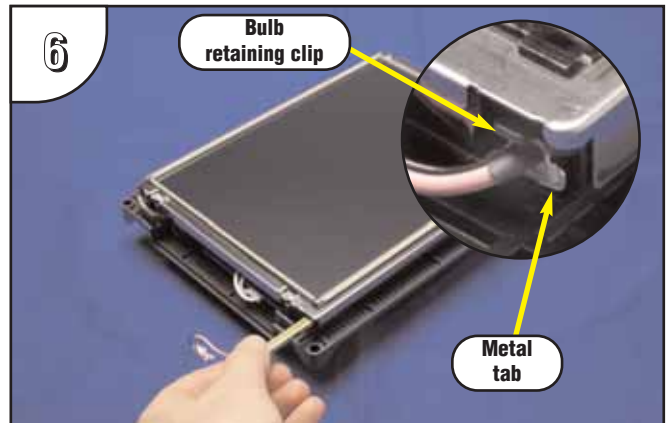
Place the touch panel's main electronic's housing facing up on a lint-free soft surface. Position the housing so that the backlight bulb connectors are in plain view.



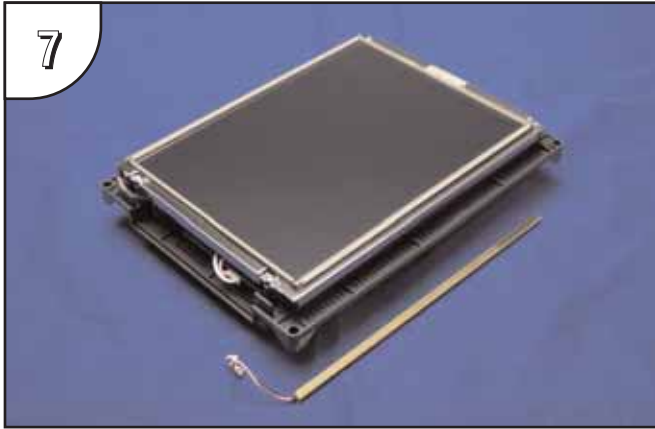
Carefully lift the bulb's wires out of the wire guides so they are free from obstructions. Do this for both the upper and lower backlight bulbs.



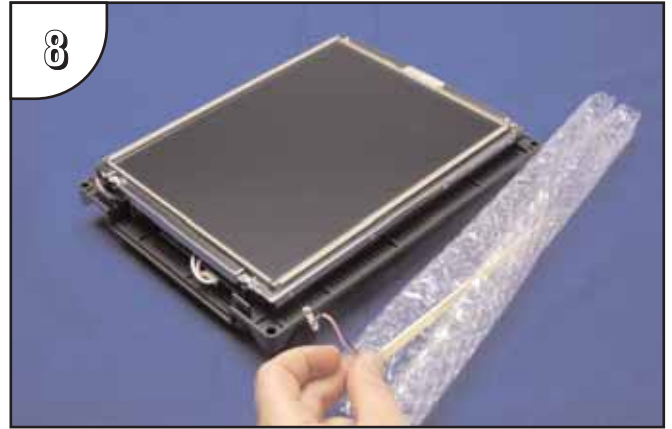
Unplug the backlight bulb's power cable connector from the circuit board connector. Again, do this for both the upper and lower backlight bulbs.



Push up on the bulb retaining clip (see detail) while grasping the metal tab on the end of the bulb assembly and gently slide the bulb from its guide. Do this for both bulbs. The bulb is glass and fragile, so handle with care.



7
The above shows the backlight bulb completely removed from its guide in the panel's main electronics housing. (Only one bulb shown.)



8
Remove the replacement bulb from its shipping tube and the protective bubble wrap. Note: The replacement bulbs come in pairs and should be replaced in pairs for longevity and maintenance convenience.



9
Position the replacement bulb so that the opening in its three-sided gold colored reflector faces toward the LCD touch screen. Using gentle pressure, slide the bulb into the guide until the retaining clip locks.



10
Plug each backlight bulb's power cable connector back into its respective circuit board connector.



11
Gently position each backlight bulb's wires back into their respective wire guides to help clear any obstructions when inserting the panel's main electronics housing back into the front bezel. Position any excess wire length in between the printed circuit board and the LCD to prevent it from becoming pinched between the housing and bezel.



12
Position the touch panel's main electronics housing into the front bezel so that the flat ribbon cable on the housing matches up with the recess in the front bezel. Insert the four screws and tighten to a maximum of 70 oz-in [0.5 Nm].

Data Sheet: EA-10-BULB-DS, Rev. A

